

## Automotive Plastics: Bumper Paint & Check Fixtures

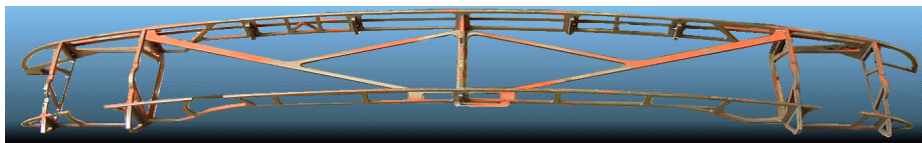


Numerous fixtures of this design have now been provided for the new BMW Mini and other vehicles. These jigs are for handling front and rear bumpers through an automated paint line the bumper is mounted onto a paint jig then subsequently onto a trolley top. These two elements allow the operator to load 4 or 6 bumpers onto a trolley top, this is then loaded onto the paint line transfer system for robotic painting.

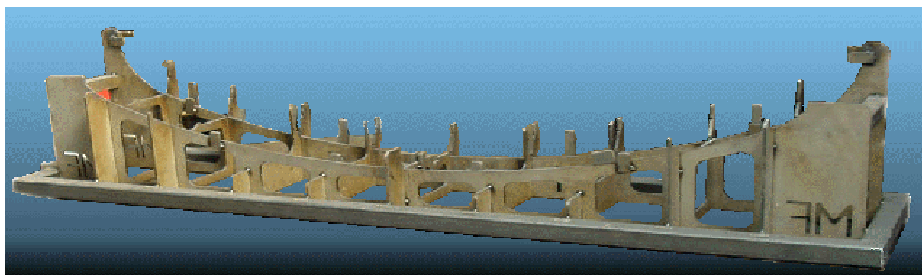
The paint cams are laser cut to suit the bumper profile and incorporate positive locations to accurately align the part. The design combines the appropriate fixturing with a light weight structure that does not flex.

To assemble and check the paint cams, welding is carried out within an accurate test fixture. This test fixture mates with the same face as the cam does with the bumper, CMM is used to measure this against bumper data.

The trolley top is again laser cut to suit the paint cam and the paint line transfer system, the capacity is based on customer requirements and the overall bumper size, 4 or 6 up is typical.



Jig



Assembly /  
Checking  
Fixture



Jig in  
Assembly /  
Checking  
Fixture

